



NEW ART EXCHANGE

# ACCESS STATEMENT

May 2023



This access statement does not contain personal opinions as to our suitability for those with access needs but aims to accurately describe the facilities and services that we offer all our/visitors

# Welcome

New Art Exchange (NAE) is a ground-breaking, award-winning and internationally recognised creative space in the heart of Hyson Green, Nottingham. We are dedicated to promoting excellence in culturally diverse contemporary arts through our exhibitions, events and engagement initiatives.

We present a changing programme of exhibitions, public programme, creative activities for families and young people, film screenings, festival days, and live performance. NAE is the executive producer of Nottingham Mela, the oldest Mela in the UK and supports emerging artists and creative practitioners of the future through a range of talent development initiatives. Entry to NAE is free.

In addition to three gallery spaces, the venue has a Cafébar serving delicious and fully plant-based food from

around the world. We also house a number of workshop and performance spaces.

Our programme of activities is dedicated to stimulating new perspectives on the value of diversity within art and society. To both inspire excellence and to support the development of new talent, we work with a range of artists from the internationally acclaimed to the local and emerging.

NAE is an Arts Council England funded National Portfolio Organisation. Diversity, innovation and excellence are at the heart of NAE's work. In a bid to embed innovation in policy and practice, NAE also provides specialist support for culturally diverse artists, creative enterprises, cultural leaders and strategic partners.

NAE is central to the urban renaissance of Nottingham, growing new untapped audiences and artistic talent as

well as connecting the space and associated artists internationally across the world.

We look forward to welcoming you. If you have any queries or require any assistance please telephone 0115 924 8630 or email [info@nae.org.uk](mailto:info@nae.org.uk)

## Getting Here

For full details and maps of how to reach us please see the directions section of our website. You can plan your journey by public transport by using Travel Line (<http://www.travelineeastmidlands.co.uk>) and entering our postcode, NG7 6BE.

## Rail

The nearest railway station is Nottingham. NAE is a 10 minute taxi journey from Nottingham station.

## Taxi

DG taxis have wheelchair accessible taxis. These can be booked in advance by calling 0115 9 500 500.

## Tram

- Another direct way of travelling from Nottingham station to NAE is by tram. Trams depart from Nottingham station every 6 minutes and it takes approximately 10 minutes to arrive at NAE's nearest stop is "The Forest" stop.
- At the previous stop "High School" there will be a public service announcement on the tram saying "Next Stop The Forest".
- NAE is located directly across the road from The Forest stop and is a two-minute walk. There is a pedestrian crossing from the tram stop to Gregory Boulevard.





The Forest Tram Stop – NAE is to the left of the High-Rise Flats on Gregory Boulevard

## By Car



## Blue Badge Parking space at rear of NAE

- NAE has two Blue Badge parking spaces at the rear of the building, just off Terrace Street (NG7 6ER). The area is well lit during darkness hours.
- For advance visits, subject to availability, we are able to reserve the spaces for blue badge holders
- There is no charge to park for blue badge holders to park in these spaces
- When you arrive and depart the building and parking space, please advise a member of the NAE reception team who can provide you with an NAE sign to place in your window.

## Entrance

- NAE is housed in a purpose-built art gallery and is made up of a wide variety of spaces over five floors.
- Outside of NAE there is even pavement and a level hard flooring throughout the building's interior.



## External frontage paving to NAE Entrance

- The main entrance to the building is on the ground floor of the building from Gregory Boulevard. There are two sets of wide, glass automatic doors.
- The area is evenly and well-lit with overhead lighting from fluorescent lights. The floors are all even and of polished concrete construction.

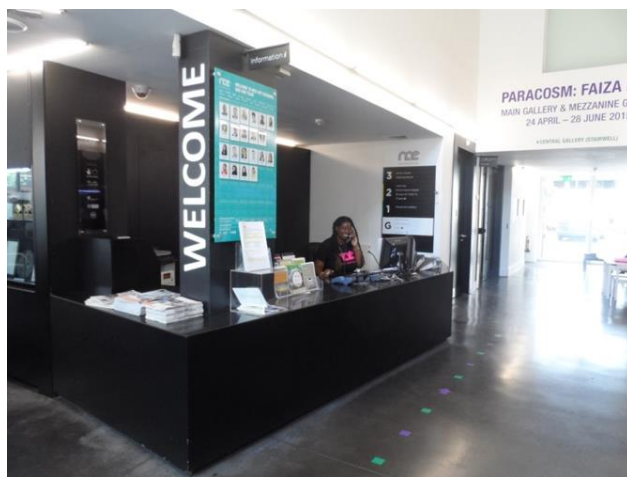


- The building is entered from Gregory Boulevard through glazed doors into a double height lobby containing the reception and Cafébar.



Main Entrance with Automatic Doors

- The ground floor has an open plan design, making it easy to access the Café, Reception and Main Gallery.



## Ground Floor Entrance area and Reception

### NAE Main Reception

- The reception area is constantly staffed and can provide you with additional information and any help with your access requirements.
- A hearing loop system is installed on the reception desk.
- A magnifying glass, pen and pad of paper is also available at the reception desk for your assistance.
- Seating (without arms) is available in the Reception area

# NAE CaféBar

- Our menu is 100% plant-based. A sample menu can be found on our website.
- The current Cafebar menu can be seen on the chalkboards behind the counter where your order should be placed. A member of the café team is available to take your order at your table if required. All food orders are delivered to your table.
- Tables and chairs can be moved, please ask a member of the café team to assist.
- There are café chairs without arms.
- Where possible all our food produce is sourced locally. We do our best to cater for any dietary requirements. If you suffer from a food allergy or intolerance, please let us know when placing your order. We have an allergen matrix that identifies which of our dishes contain 14 of the most common food allergens. Please ask a member of the café team for full details.
- We have 2 highchairs.

- Lighting is natural daylight with overhead fluorescent lighting.



## Public Toilets and Shower Facilities

Adjacent to the main reception counter on the ground floor there is a fully accessible toilet with baby changing facilities.

- There are vertical rails on either side of both the basin and toilet.
- Right-hand transfer.

- A flashing light is activated when the fire alarm sounds.
- There is an emergency alarm pull cord.
- There are lever taps on the sinks.



Additional accessible toilets and shower facilities are on the second floor, which can be accessed via the lift or stairs.

## **Second Floor Shower/Wet Room**

- Shower Seat

- Vertical rail
- Full-length mirror.



There are also three ambulant toilet cubicles on this floor.  
One for females only, and two gender-neutral toilets.



# Passenger Lift

- All floors have full lift access.
- Capacity 34 people (maximum weight 2,600kg).
- The lighting in the lift is fluorescent.
- The interior has a rear mirror.



# Exhibition and Public Spaces

The exhibitions in the Main, Mezzanine and Street Galleries vary with up to three different exhibitions in each space annually.



## Ground Floor - Main Gallery

- The Main Gallery is on the ground floor.
- On occasion temporary walls are added and lighting settings are altered.

- The exhibition designs always allow enough space for wheelchairs to navigate.
- If the gallery is darkened (during film/video installations) lit emergency exit signs are used
- During each season of work there is a supporting Public Programme, please enquire at reception for full details and dates.
- There are easy to read alternative descriptions/interpretations of any exhibition text available. Please ask at Reception.

## **First Floor – Mezzanine Gallery**

- Access to the first floor is via the main passenger lift or stairs.
- There is a double-width door for entry to the gallery space

- There are easy to read alternative descriptions/interpretations of any exhibition text available. Please ask at Reception.



The Mezzanine Gallery

## **Second Floor – Performance Space and Learning Room**

Access to the second floor is via the main passenger lift or stairs.

- The Performance Space and Learning Room are situated on the second floor.
- The Performance Space employs a series of ‘windcatchers’ to the roof which create a pressure difference and encourage the expulsion of hot air. Other rooms are simply vented by cross ventilation triggered by opening windows.
- There is a double-width door for entry to both the performance space and learning room.
- A hearing loop system is installed in the performance space.



## The Performance Space



## The Learning Room

### Third Floor - Meeting Room

- Access to the third floor is via the main passenger lift or stairs.





- There is a single-width door for entry to the space
- The chairs in the meeting room have arms
- Fluorescent lighting is used

The nearest accessible toilets, baby changing and shower facilities are available on the second floor accessible by the main passenger lift (see above for full description of facilities)

## Basement

- Access to the basement is via the main passenger lift.
- Ambulant Toilet facilities are available on this floor.

# Access Programme

- NAE offers an access programme for the various needs of different peoples.
- Due to the nature of the gallery spaces and the readily changing exhibition programme we do not offer audio tours.
- We have large vinyl signs providing information about each exhibition.
- We have a resource area where video clips are shown (with subtitles where possible) and a selection of art/general interest books.

## Additional Information

- We have a set of evacuation procedures, which a member of staff can talk you through. Evacuation chairs are available.

- Assistance dogs are welcome and water can be provided upon request.
- All our information can be made available in large print on request. Please just ask at reception.

## **Shopmobility**

A scheme run by Nottingham City Council who provide access to Nottingham City Centre's shops and facilities with the free loan to members of self propelled or powered wheelchairs, 3 and 4 wheeled scooters.

More information can be found here.

<http://www.nottinghamcity.gov.uk/shopmobilitynottingham>

## **Accessible local hotels**

Please see below a list of local accessible hotels.

- Premier Inn

[HTTP://WWW.PREMIERINN.COM/EN/HOTEL/NOTMTI/NOTTINGHAM-CITY-CENTRE-GOLDSMITH-STREET](http://www.premierinn.com/en/hotel/NOTMTI/NOTTINGHAM-CITY-CENTRE-GOLDSMITH-STREET)

- IBIS <http://www.ibis.com/gb/hotel-6160-ibis-nottingham-centre/index.shtml>

## Feedback

We are always looking for ways to improve the service we provide our visitors, so please contact us if you have any comments or suggestions about this access statement or anything else that you think can improve your visit to us:

## Contact Information

Address: New Art Exchange, 39-41 Gregory Boulevard,  
Nottingham. NG7 2NG

**Telephone:** 0115 924 8630 **Email:** [info@nae.org.uk](mailto:info@nae.org.uk)

**Website:** [www.nae.org.uk](http://www.nae.org.uk)

## Opening Hours:

Tuesday: 10.00 am - 4.00pm

Wednesday: 10.00 am - 4.00pm

Thursday: 10.00 am - 4.00pm

Friday: 10.00 am - 4.00pm

Saturday: 10.00 am - 4.00pm

The gallery is closed to the public on Sundays, Mondays and Bank Holidays.

**Local Accessible Taxi:** DG Cars 0115 9 500 500

### **Local Travel Provider**

Speak to a travel advisor who will help you plan your journey. Calls cost 10p per minute plus any network charges. Tel: 0871 200 22 33